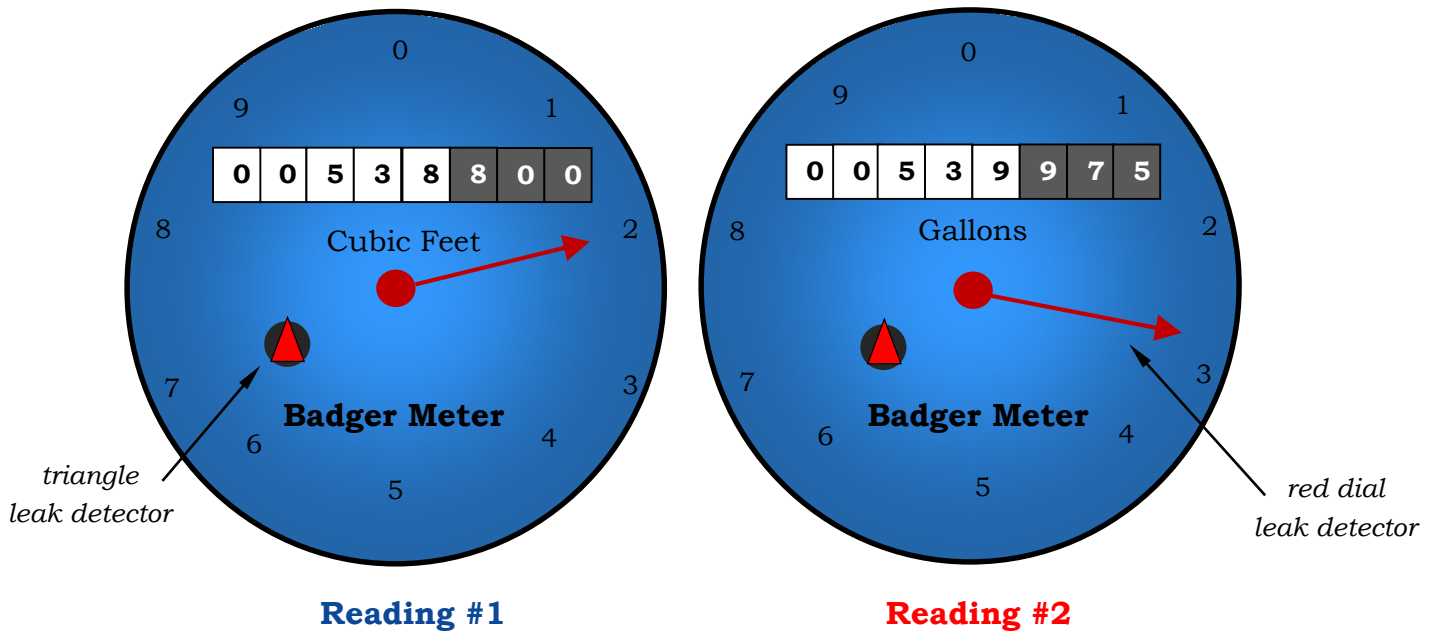


# How to Read Your Meter





**To calculate usage** ..... always read the meter from left to right

Take a meter reading; **reading #1** is **00538800** cubic feet

Take another meter reading; **reading #2** is **00539975** Gallons

$$\begin{array}{r}
 \text{Subtract reading \#1 from reading \#2:} \quad \mathbf{00539975} \\
 - \quad \mathbf{00538800} \\
 \hline
 = \quad \mathbf{1,175 \text{ gallons used}}
 \end{array}$$

**\*NOTE:** the **red dial**  on your meter functions as a *leak detector*.

The **red triangle**  on your meter also functions as a *leak detector*.

It turns much faster than the red dial or the numbers.

If you can see either dial turning when all water is shut off, you have a leak!